

## SimCorder Soft

- easy configuration of data communication connections
- ability to send alert emails and SMS
- extended reporting systems
- graphical process visualisation
- operates with SIMEX equipment provided with Modbus RTU SLAVE

**SimCorder Soft** is a visualisation application created to facilitate work with advanced networks of the SIMEX devices. Acquisition, archiving, visualisation, reporting and exporting measurement data from all network devices is now very simple - all you need is one computer station. You can download measurements from the devices automatically or on demand. There is a possibility of immediate notification about emergency states via SMS or e-mail, which will often allow to quickly resolve an arising problem while avoiding long and expensive stoppages. Additionally, you can view the measurement data, emergency states and configuration via the internet.

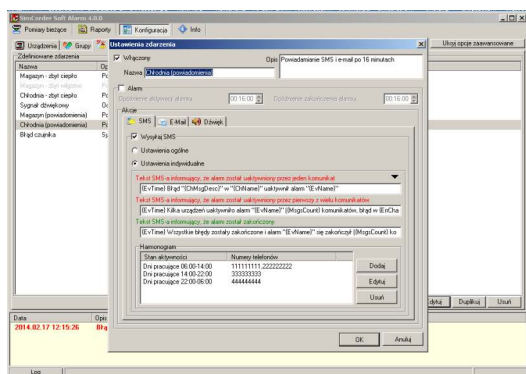
### RECORDING DATA

**SimCorder Soft** which uses the ModBus RTU protocol as a supervisory application, downloads measurement data and saves it on the hard drive in the form of a database file.



### VIEWING CRITICAL SITUATIONS AND ERRORS

The alarm system is a necessary component of each visualisation application. Fast response of the operator and automatic launch of emergency procedures both aid in restoring the system to its nominal operation. The advanced modules which manage the method of notifying about emergency situations make it easier to set the priorities of event management.



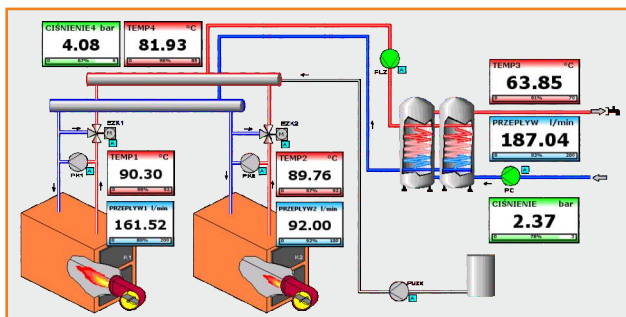
### PRESENTATION OF MEASUREMENT

In order to simplify the analysis of the industrial process parameters, the operator has the possibility of preparing a visualisation of the data in a table or as a graph where the application is presented using symbols.

Device name	[Unit]	Cur. measurement	Avg. measurement	Max measurement	Min measurement
Pump flow	[l/min]	20.0	16.8	20.0	13.5
SC inlet temp.	[°C]	15.7	20.1	24.5	15.7
SC outlet temp.	[°C]	28.2	31.3	34.4	28.2
Tank inlet temp.	[°C]	12.3	12.3	12.3	12.3
Tank outlet temp.	[°C]	66.2	69.3	72.4	66.2
Boiler Power	[W]	527	264	527	0
Boiler Temp.	[°C]	85.0	85.0	85.0	85.0
Water flow	[l/min]	50.0	41.9	50.0	32.0
Pump Power	[W]	116	104	116	92
Air Temp. (in sun)	[°C]	33.2	36.4	39.5	33.2
DMC-99 CH17 (I)	[°C]	---	---	---	---
DMC-99 CH18 (I)	[°C]	---	---	---	---
DMC-99 CH19 (I)	[°C]	---	---	---	---
DMC-99 CH20 (I)	[°C]	---	---	---	---
DMC-99 CH21 (I)	[°C]	---	---	---	---
DMC-99 CH22 (I)	[°C]	---	---	---	---
DMC-99 CH23 (I)	[°C]	---	---	---	---

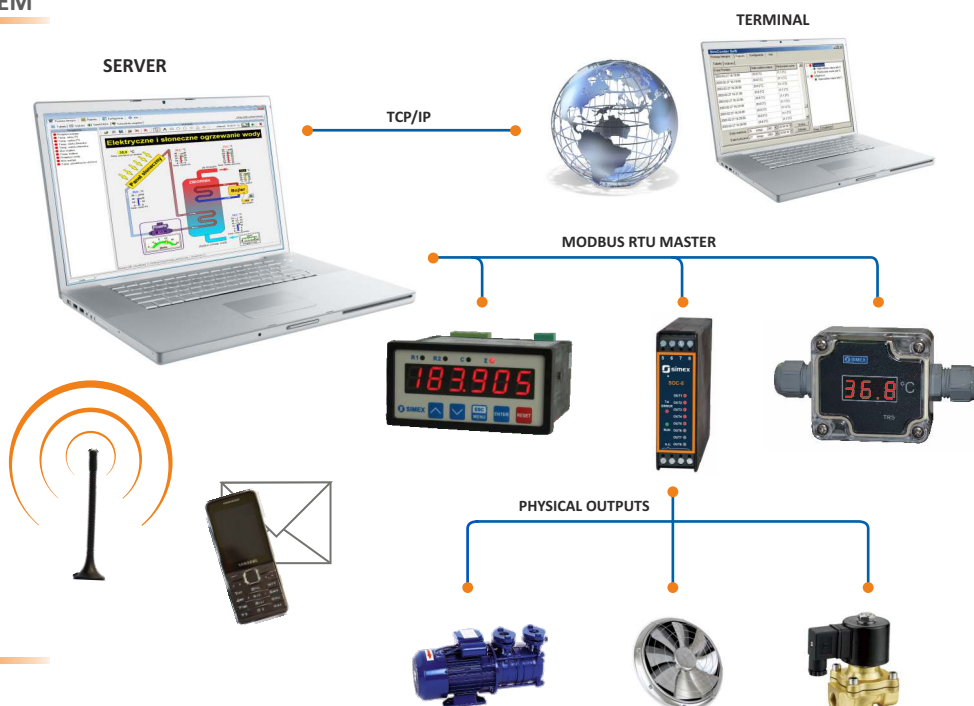
### semiSCADA

**semiSCADA** is a component of **SimCorder Soft** used for graphical presentation of current analogue measurements which enables to evaluate the nature of signal changes. Thanks to the user friendly editor, it is possible to quickly "draw" the system. Various types of indicators and dynamic objects are available which can be located on a plan in order to transparently present the state of the monitored application and observe the dynamic values of measurements at particular stages of the process.



## REMOTE COOPERATION WITH THE SYSTEM

**SimCorder Soft** communicates with external devices using the RS-485 interface with the Modbus RTU protocol and reads measurement data from the above devices. A computer may be connected directly to the network of devices or via the internet. This software enables sound and visual alerts (e.g. in case the temperature is too high in the cooler, excessive humidity, insufficient flow etc.). The system can be configured so that each alert evokes a particular response of selected signalling modules like **TRS-B1** or **SOC-8** manufactured by SIMEX.



## MONITORING FROM ANYWHERE

A computer with **SimCorder Soft** installed in the **Network SERVER** version may share, via the internet, recorded data and system informations to other users (up to 10 working units) equipped with an **Network TERMINAL** application. The data can be viewed as tables or diagrams or exported to csv format on a computer with the **Network TERMINAL** version installed. The **Network TERMINAL** version also allows to print reports based on the above data. An insight into the entire system is possible from anywhere and at any time.

## SIMCORDER SOFT VERSIONS

Features	BASIC	ALARM	NETWORK	
			SERVER	TERMINAL
USB dongle key with license required	✓	✓	✓	
semiSCADA	✓*	✓*	✓*	
Data measurement on demand	✓	✓	✓	
Direct cooperation with data loggers	✓	✓	✓	
Easy devices reconfiguration	✓	✓	✓	
Alarm state signalization	✓	✓	✓	✓
Alarm forwarding to external devices		✓	✓	
GSM and e-mail notification		✓	✓	
Remote network			✓	✓

\* functionality depends on the license

## AVAILABLE LICENSES

- SB** SimCorder Soft Basic USB License Dongle
- SBS** SimCorder Soft Basic & semiSCADA USB License Dongle
- SA** SimCorder Soft Alarm (software with SMS and e-mail alarm functions) USB License Dongle
- SAS** SimCorder Soft Alarm (software with SMS and e-mail alarm functions) & semiSCADA USB License Dongle
- SN3** SimCorder Soft Network (licence for 3 PC stations) USB License Dongle
- SNS3** SimCorder Soft Network (licence for 3 PC stations) & semiSCADA USB License Dongle
- SN10** SimCorder Soft Network (licence for 10 PC stations) USB License Dongle
- SNS10** SimCorder Soft Network (licence for 10 PC stations) & semiSCADA USB License Dongle

